

**TOSHKENT VILOYATI
STATISTIKA BOSHQARMASI**



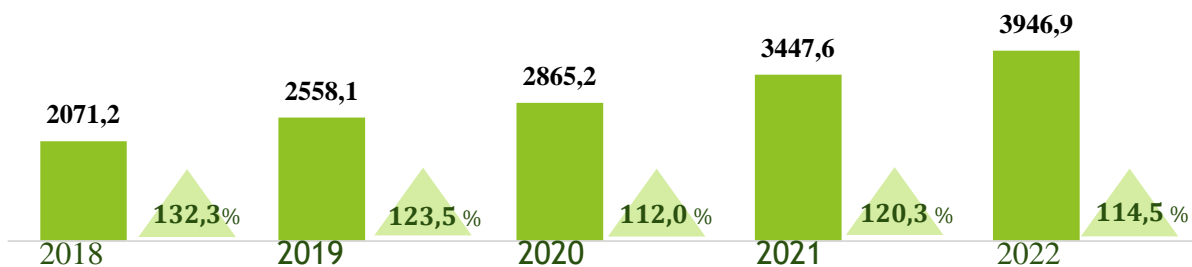
NOMINAL HISOBLANGAN O'RTACHA OYLIK ISH HAQI

*qishloq xo'jaligi va kichik tadbirkorlik
subyektlarisiz, dastlabki ma'lumotlar*

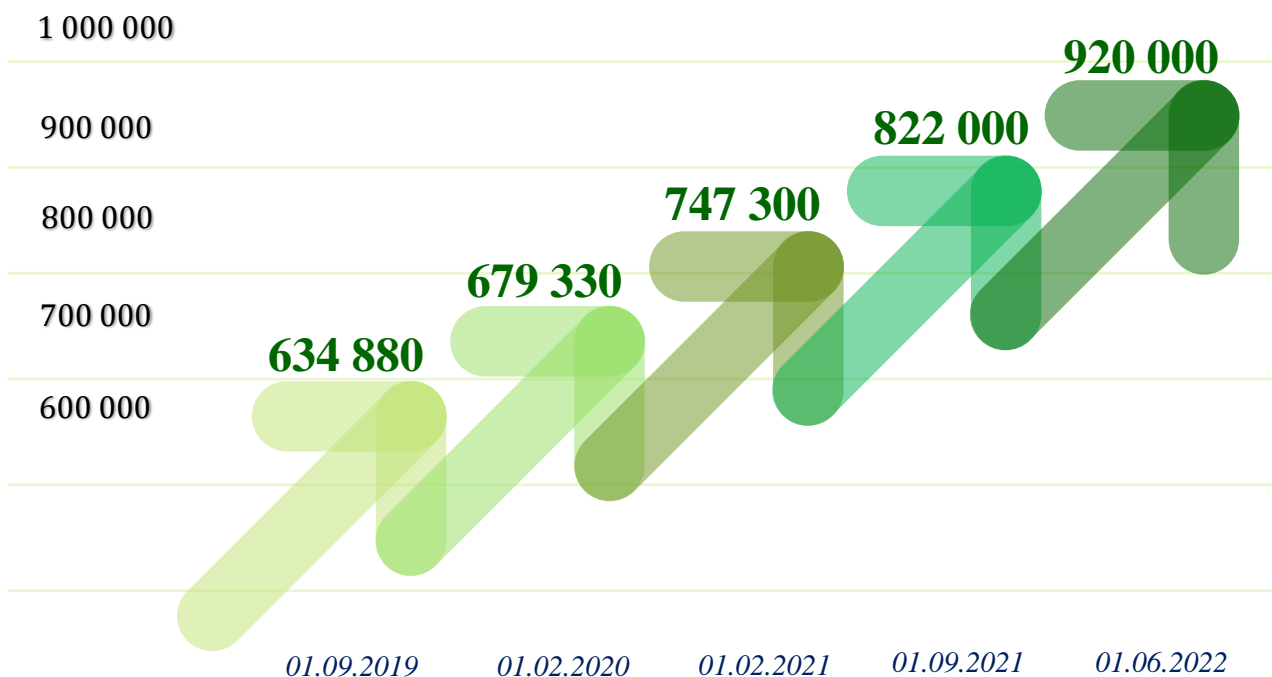
2022 - yil yanvar-dekabr

O'rtacha oylik ish haqining yillar kesimidagi dinamikasi

yanvar-dekabr, o'sish darajasi o'tgan yilning mos davriga nisbatan, ming so'm



Mehnatga haq to'lashning eng kam miqdori dinamikasi, so'mda



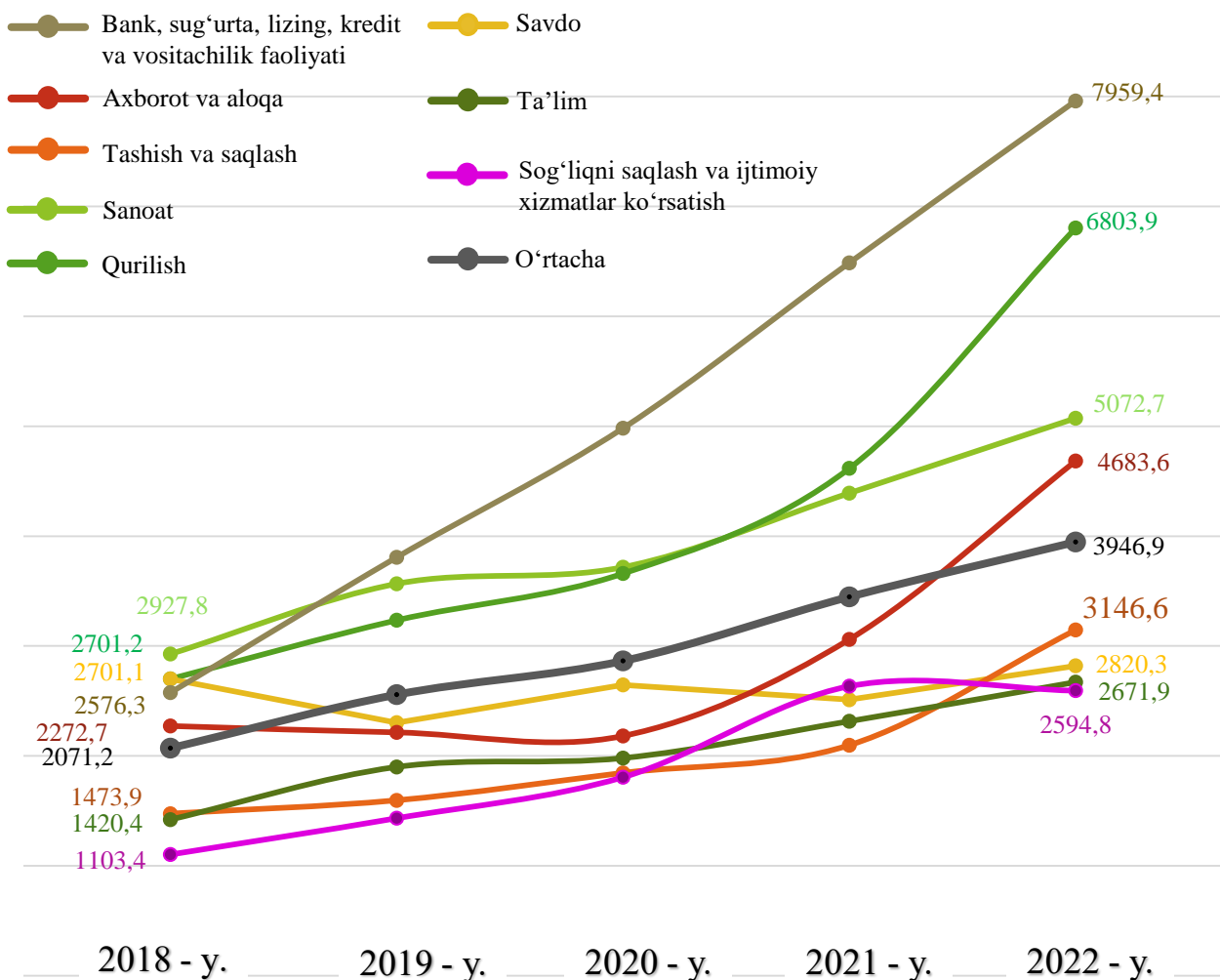
Ma'lumot uchun: Mehnatga haq to'lashning eng kam miqdoriga 2022 - yil 1 - iyundan o'zgartirish kiritildi hamda **920,0 ming so'mga** yetkazildi.

2022 - yil yanvar-dekabr oylari uchun o'rtacha oylik ish haqi ko'rsatkichini shakllantirishda qishloq xo'jaligi va kichik tadbirkorlik subyektlari **hisobga olinmagan**, chunki fermer xo'jaliklari hamda kichik tadbirkorlik subyektlari **yilda bir marta** hisobot taqdim etishi belgilangan.

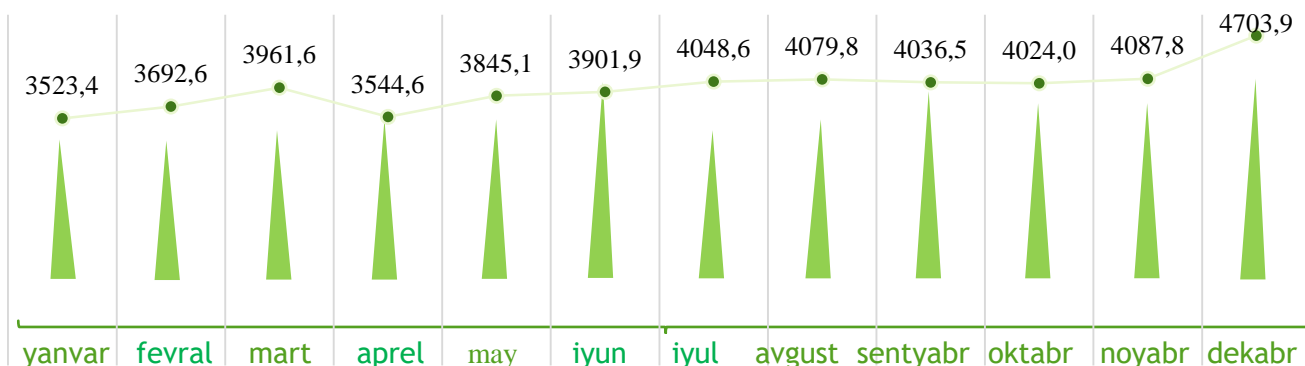
Yuridik shaxs maqomiga ega bo'lgan korxonalar va tashkilotlarda ishlovchi xodimlarning o'rtacha oylik nominal hisoblangan ish haqlari (keyingi o'rinlarda – o'rtacha oylik ish haqi) har bir iqtisodiy faoliyat turlarida turlicha farqlanadi.

O'rtacha oylik nominal hisoblangan ish haqi tarkibiga qo'shimcha to'lovlar, mukofot pullari, rag'batlantiruvchi to'lovlar, kompensatsiya va ishlamagan vaqti uchun to'lovlar, shuningdek, jismoniy shaxslardan olinadigan daromad solig'i va kasaba uyushmasiga ajratmalar kiradi.

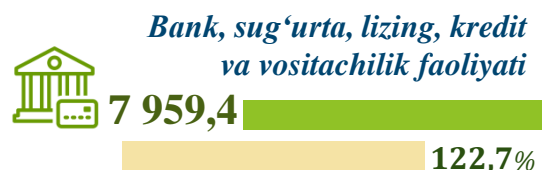
O'rtacha oylik ish haqining tarmoqlar bo'yicha o'zgarish dinamikasi, yanvar-dekabr, ming so'm



2022 - yilda o‘rtacha oylik ish haqining oylar kesimidagi dinamikasi, ming so‘m



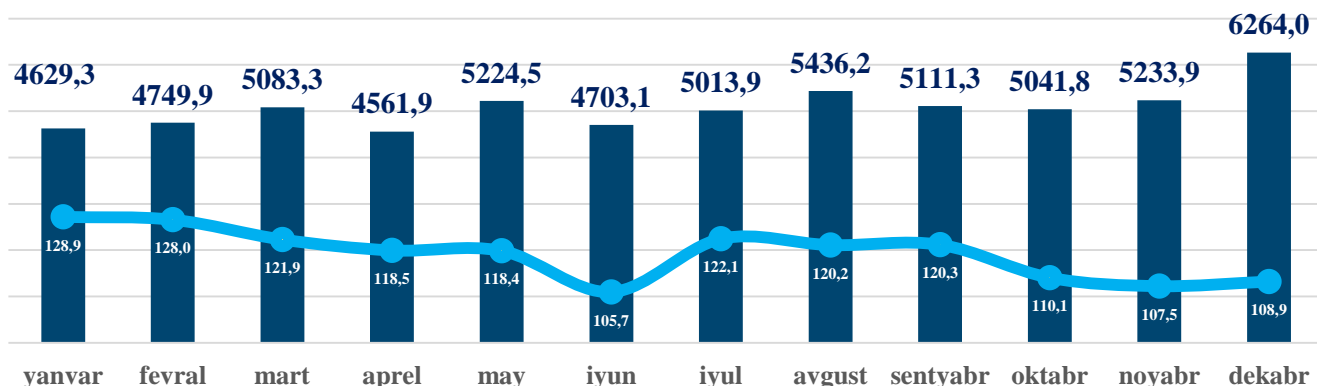
Iqtisodiy faoliyat turlari kesimida o‘rtacha oylik ish haqi, ming so‘m



2022-yilning yanvar-dekabr oylarida iqtisodiy faoliyat turlari bo‘yicha o‘rtacha oylik ish haqining eng baland ko‘rsatkichi – Bank, sug‘urta, lizing, kredit va vositachilik sohasiga to‘g‘ri kelib, o‘tgan yilning mos davriga nisbatan o‘shish darajasi **122,7 %** ni tashkil etdi.

Shuningdek, Qurilish sohasi **147,4 %**, Sanoat sohasi **115,5 %**, Axborot va aloqa sohasida **153,0 %**, Tashish va saqlash sohasi **150,0 %**, Savdo sohasi **112,3 %**, hamda Ta'lim sohasi **115,4 %** o‘sganligini ko‘rishimiz mumkin.

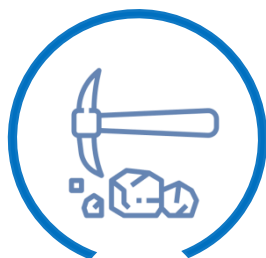
SANOAT SOHASIDA O‘RTACHA OYLIK ISH HAQI



■ ming so‘m

● o‘tgan yilning mos davriga nisbatan o‘shish sur‘ati, % da

Sanoatning asosiy tarmoqlari bo‘yicha o‘rtacha oylik ish haqi, ming so‘m



4 268,7

Tog‘-kon sanoati va
ochiq konlarni ishlash



5 250,5

Ishlab chiqarish
sanoati



2 239,9

Suv bilan ta‘minlash,
kanalizatsiya tizimi,
chiqindilarni yig‘ish
va utilizatsiya qilish

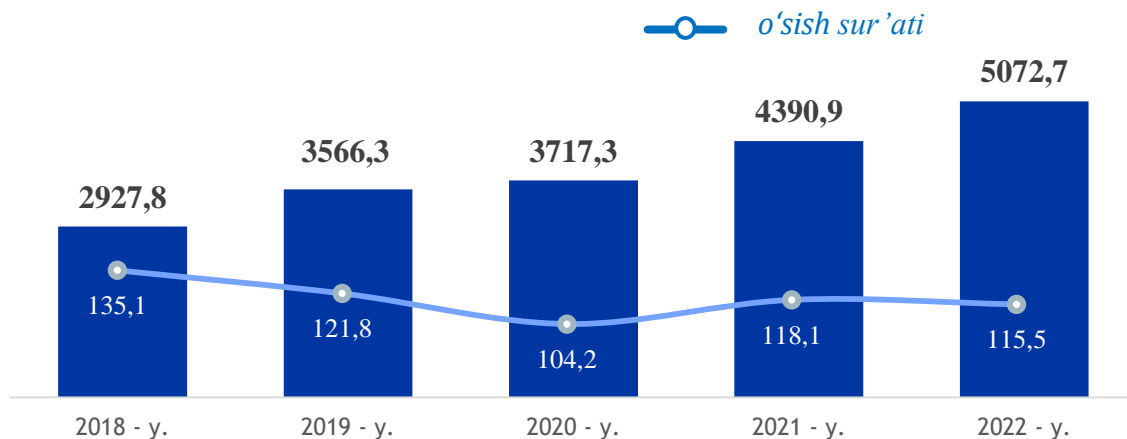


5 177,0

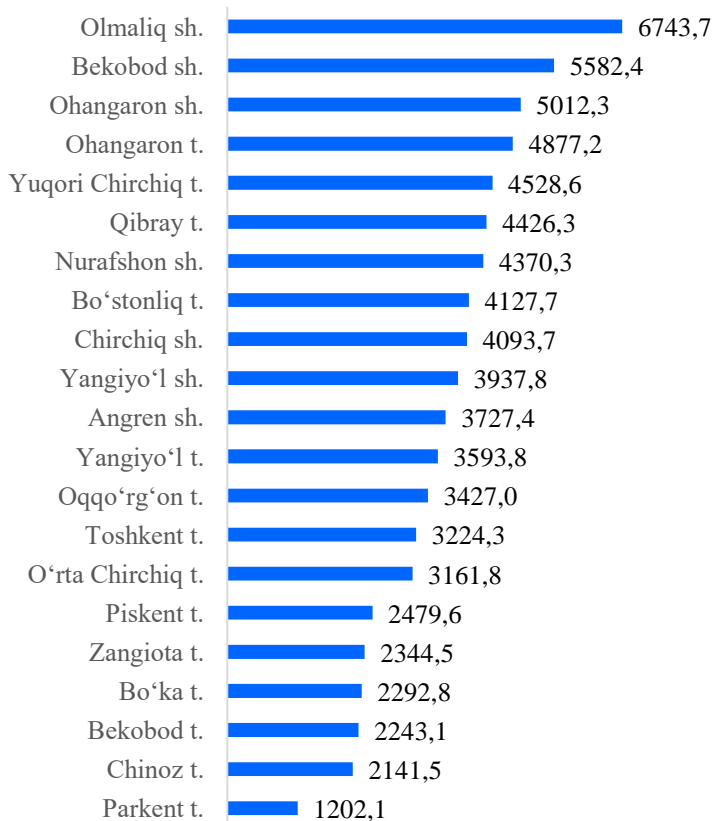
Elektr, gaz, bug‘
bilan ta‘minlash va
havoni konditsiyalash

Sanoatning asosiy tarmoqlari bo‘yicha o‘rtacha oylik ish haqining eng yuqori ko‘rsatkichi ishlab chiqarish sanoati (**5 250,5 ming so‘m**), elektr, gaz, bug‘ bilan ta‘minlash va havoni konditsiyalash (**5 177,0 ming so‘m**) hamda Tog‘-kon sanoati va ochiq konlarni ishlash (**4 268,7 ming so‘m**) da kuzatildi.

Sanoat sohasida o'rtacha oylik ish haqining yillar kesimidagi dinamikasi, ming so'm



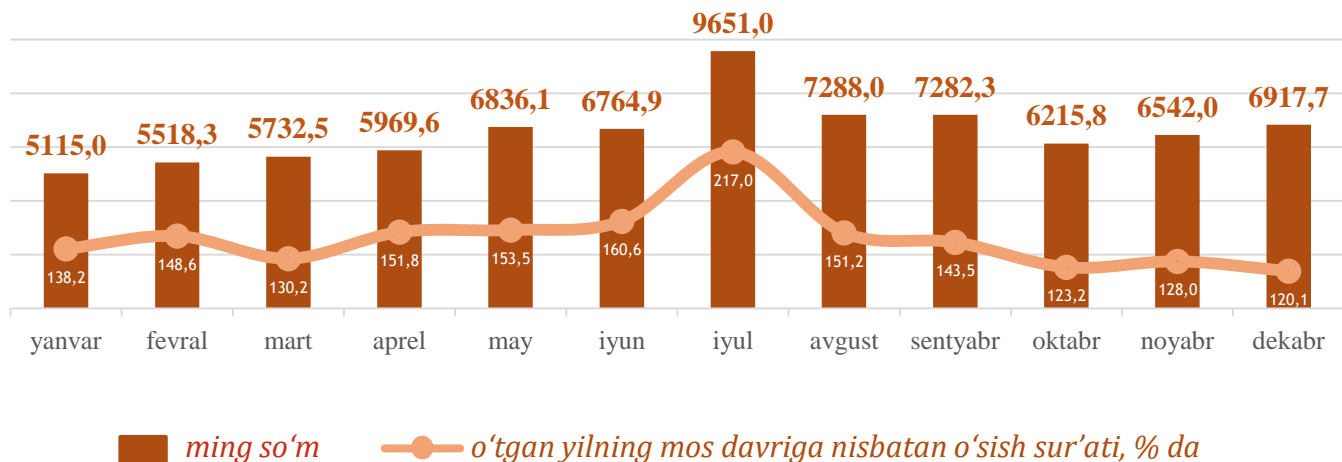
Hududlar kesimida



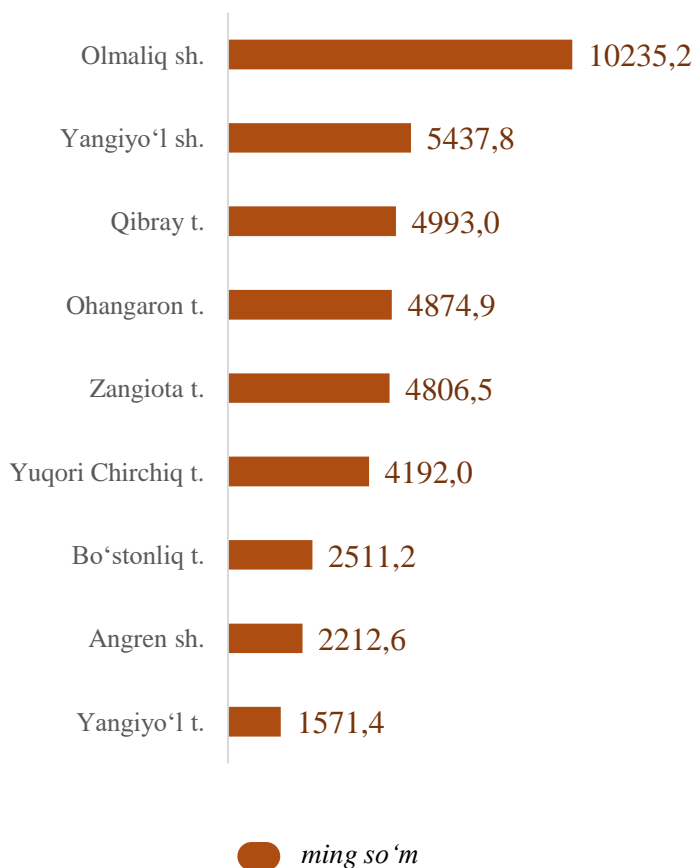
Sanoat iqtisodiy faoliyat turi bo'yicha o'rtacha oylik ish haqining eng yuqori ko'rsatkichi Olmaliq shahar (**6743,7 ming so'm**), Bekobod shahri (**5582,4 ming so'm**), Ohangaron shahri (**5012,3 ming so'm**), Yuqori Chirchiq (**4528,6 ming so'm**) hamda Qibray tumanida (**4426,3 ming so'm**) kuzatildi.

 ming so'm

QURILISH SOHASIDA O'RTACHA OYLIK ISH HAQI

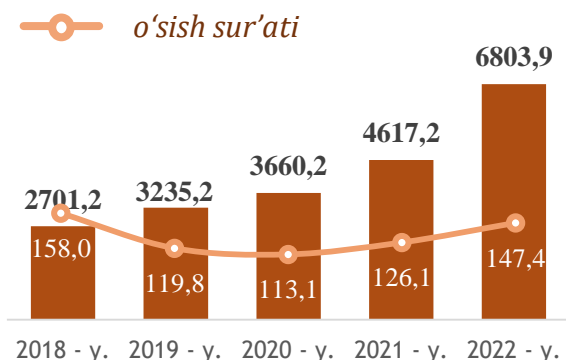


Hududlar kesimida

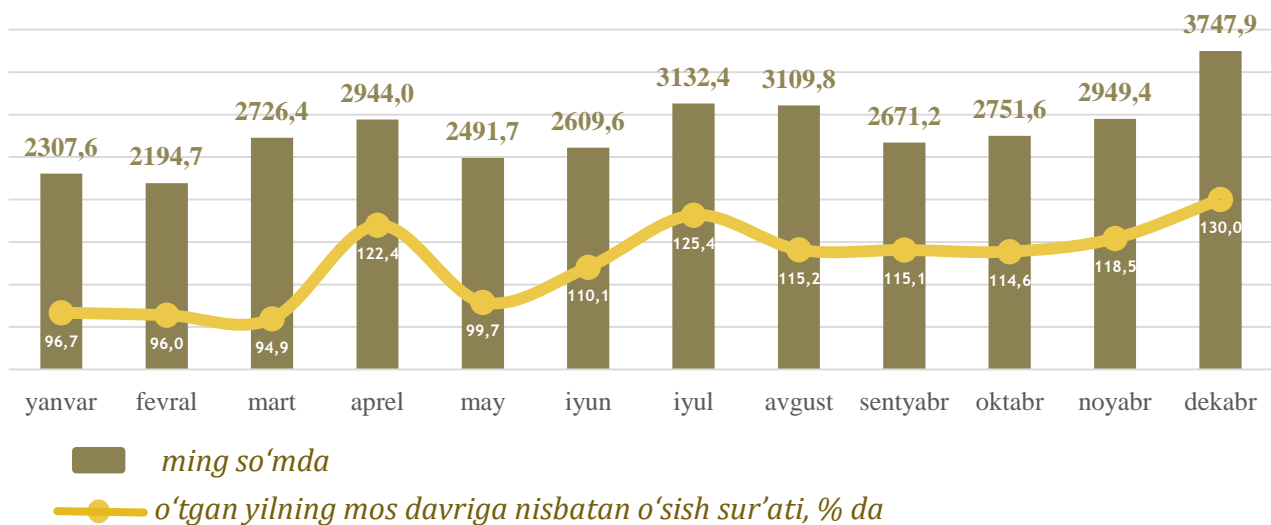


Qurilish faoliyat turi bo'yicha o'rtacha oylik ish haqining eng yuqori ko'rsatkichi Olmaliq shahri (**10235,2 ming so'm**), Yangiyo'l shahri (**5437,8 ming so'm**), Qibray tumani (**4993,0 ming so'm**)da qayd etildi.

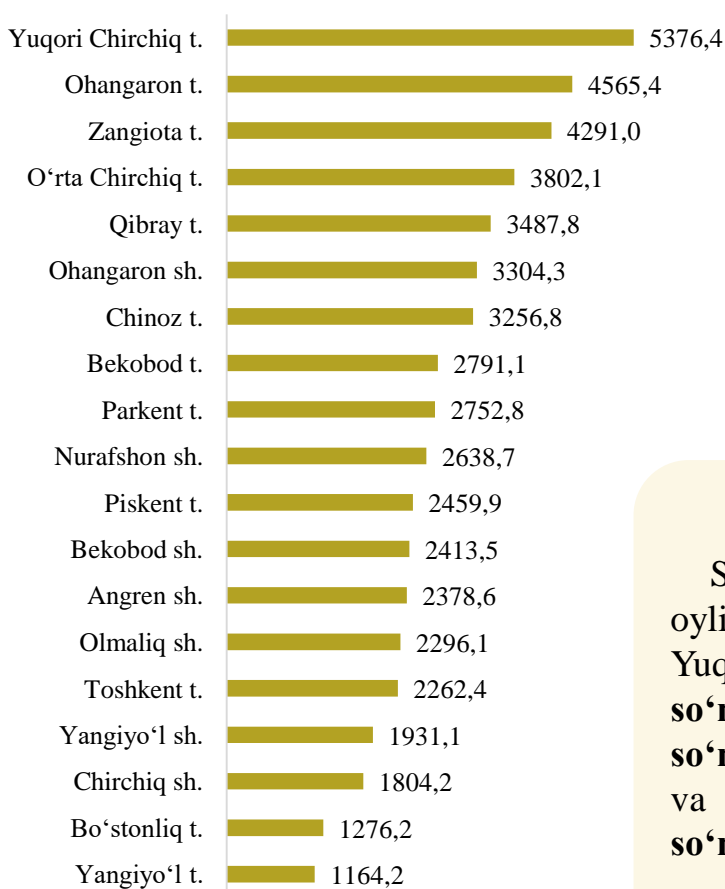
O'rtacha oylik ish haqining yillar kesimidagi dinamikasi, ming so'm



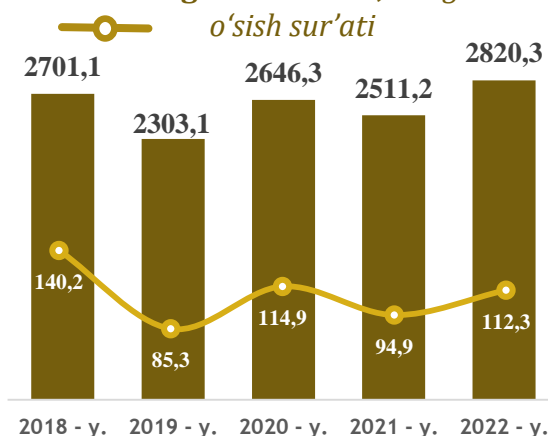
SAVDO SOHASIDA O'RTACHA OYLIK ISH HAQI



Hududlar kesimida



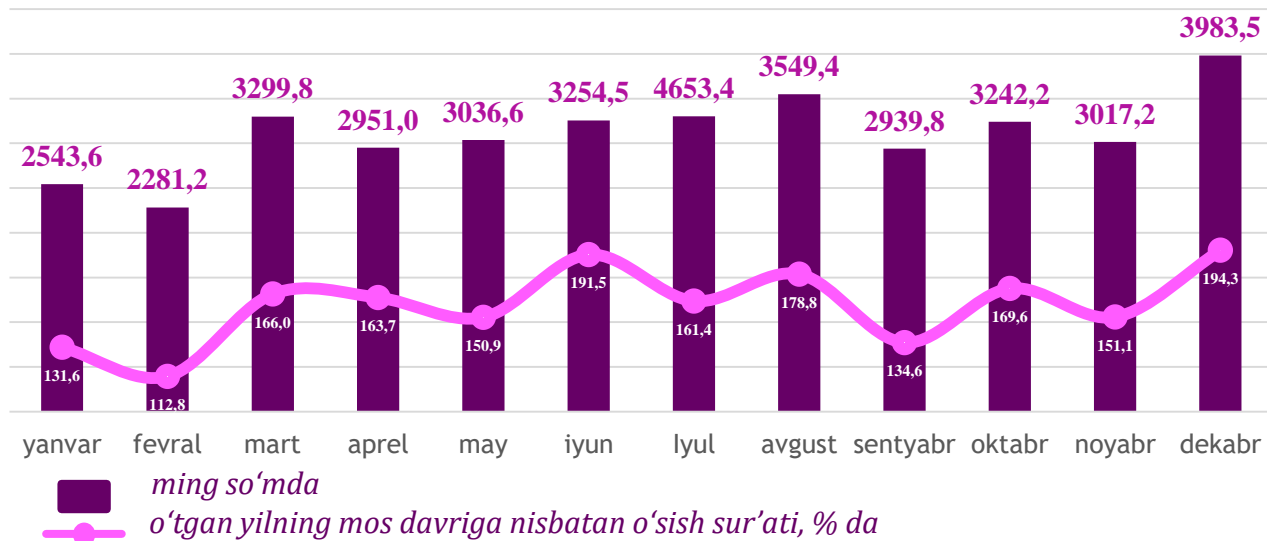
O'rtacha oylik ish haqining yillar kesimidagi dinamikasi, ming so'm



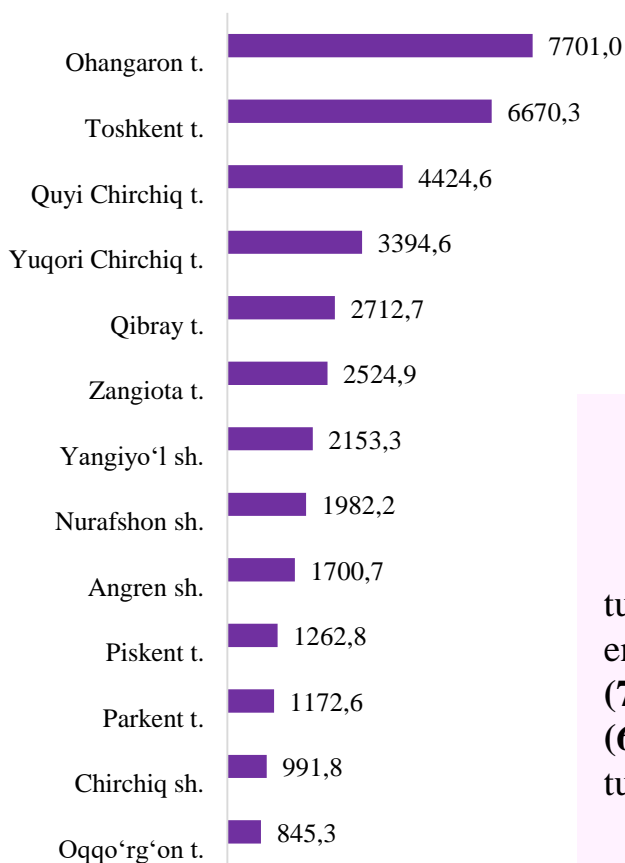
Savdo faoliyat turi bo'yicha o'rtacha oylik ish haqining eng yuqori ko'rsatkichi Yuqori chirchiq tumani (**5376,4 ming so'm**), Ohangaron tumani (**4565,4 ming so'm**), Zangiota tumani (**4291,0 ming so'm**) va O'rtachirchiq tumanida (**3802,1 ming so'm**) kuzatildi..

ming so'm

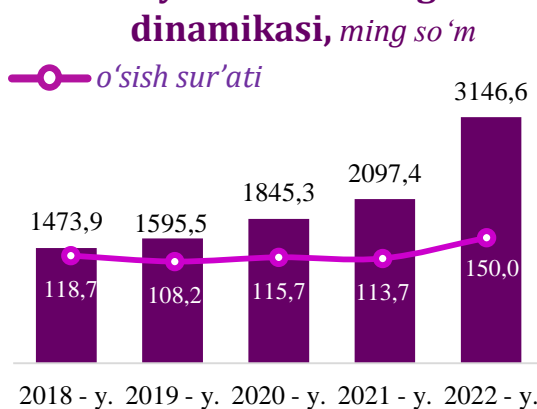
TASHISH VA SAQLASH SOHASIDA O'RTACHA OYLIK ISH HAQI




Hududlar kesimida



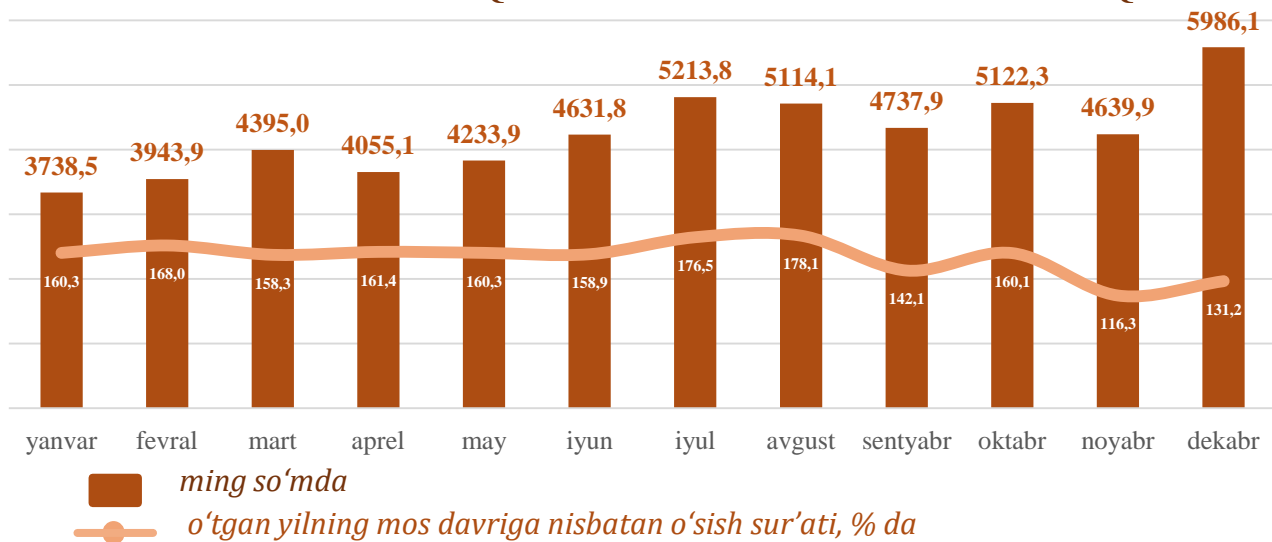
O'rtacha oylik ish haqining yillar kesimidagi dinamikasi, ming so'm



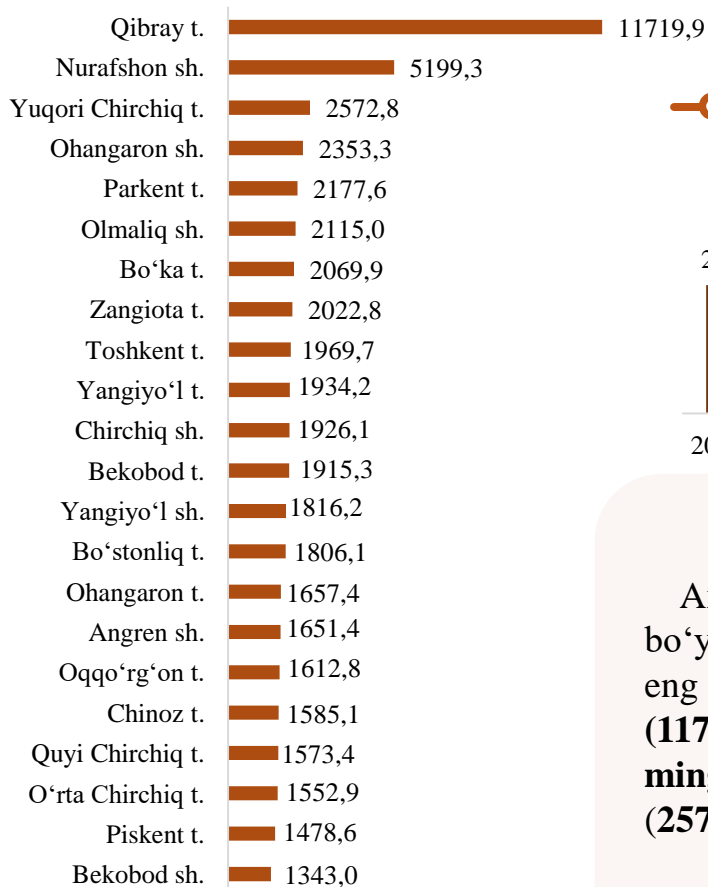
Tashish va saqlash iqtisodiy faoliyat turi bo'yicha o'rtacha oylik ish haqining eng yuqori ko'rsatkichi Ohangaron tumani (**7701,0 ming so'm**), Toshkent tumani (**6670,3 ming so'm**) hamda Quyichirchiq tumani (**4424,6 ming so'm**)da kuzatildi.

 ming so'm

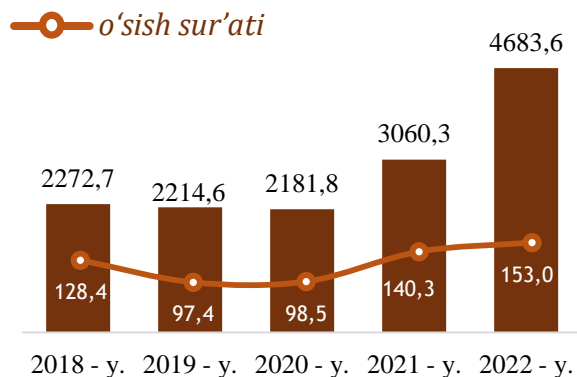
AXBOROT VA ALOQA SOHASIDA O'RTACHA OYLIK ISH HAQI




Hududlar kesimida



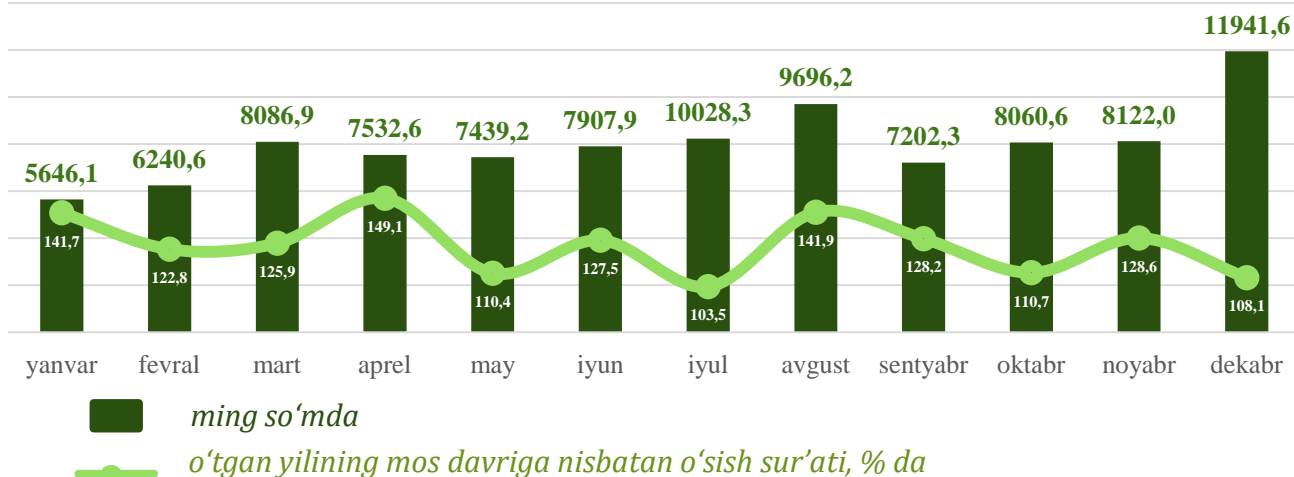
O'rtacha oylik ish haqining yillar kesimidagi dinamikasi, ming so'm



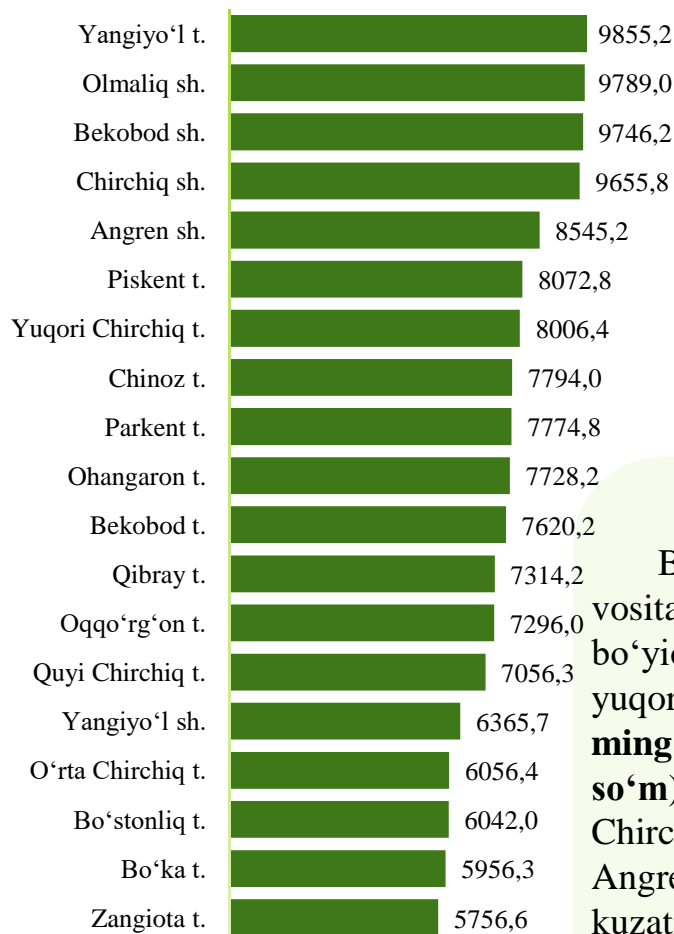
Axborot va aloqa faoliyat turi bo'yicha o'rtacha oylik ish haqining eng yuqori ko'rsatkichi Qibray tumani (**11719,9**) Nurafshon shahri (**5199,3 ming so'm**), Yuqori chirchiq tumani (**2572,8 ming so'm**) da kuzatildi.

 ming so'm

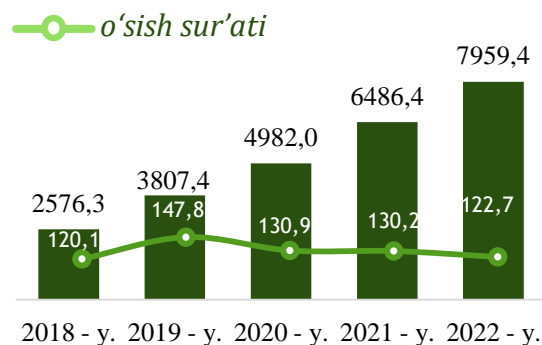
BANK, SUG'URTA, LIZING, KREDIT VA VOSITACHILIK SOHASIDA O'RTACHA OYLIK ISH HAQI



Hududlar kesimida



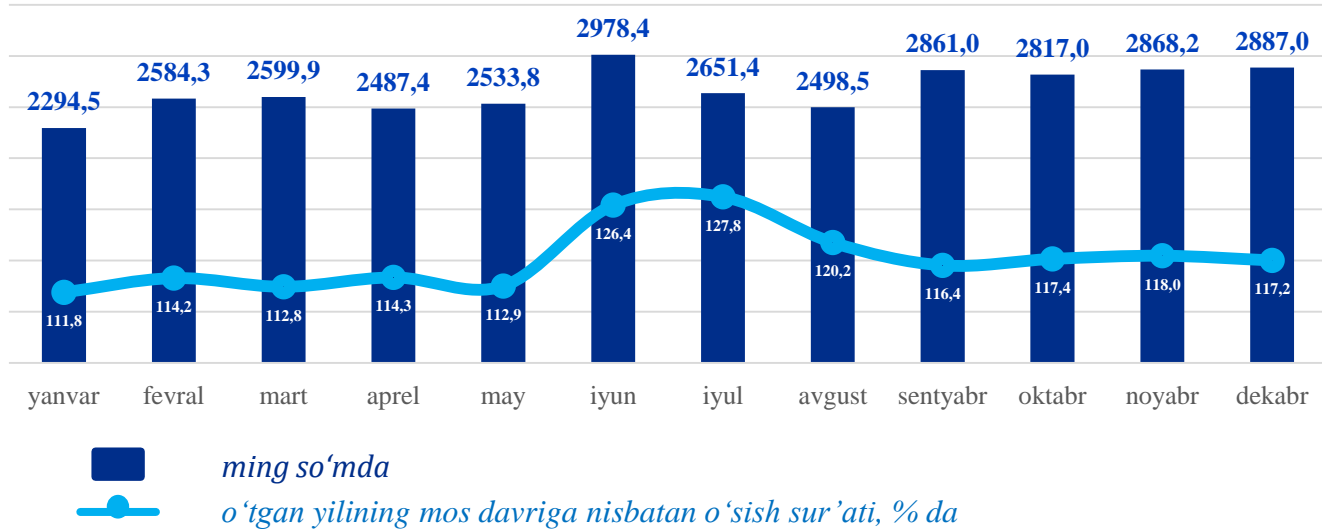
O'rtacha oylik ish haqining yillar kesimidagi dinamikasi, ming so'm



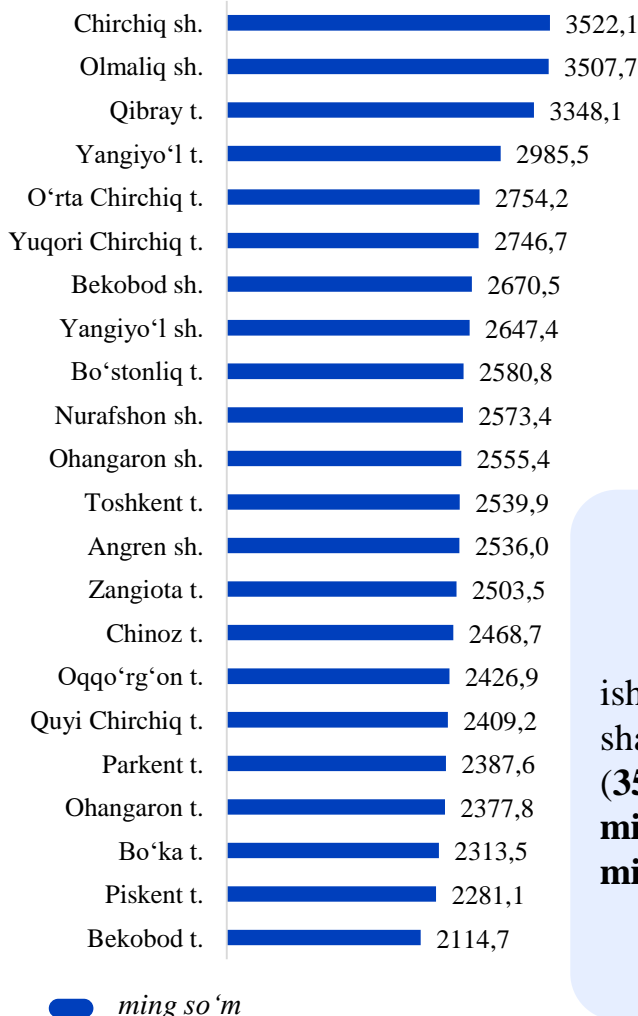
Bank, sug'urta, lizing, kredit va vositachilik faoliyati iqtisodiy faoliyat turi bo'yicha o'rtacha oylik ish haqining eng yuqori ko'rsatkichi Yangiyo'l tumani (**9855,2 ming so'm**), Olmalik shahri (**9789,0 ming so'm**), Bekobod shahri (**9746,2 ming so'm**), Chirchiq shahri (**9655,8 ming so'm**) hamda Angren shahri (**8545,2 ming so'm**)da kuzatildi.

 ming so'm

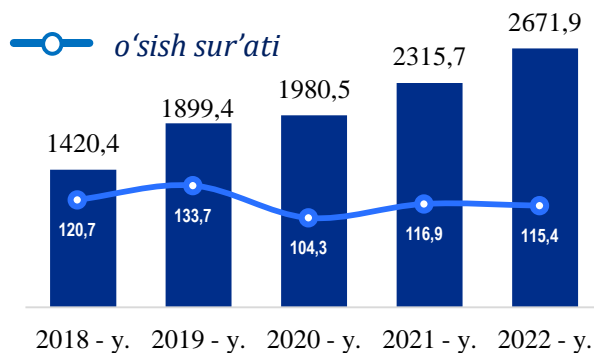
TA'LIM SOHASIDA O'RTACHA OYLIK ISH HAQI



Hududlar kesimida

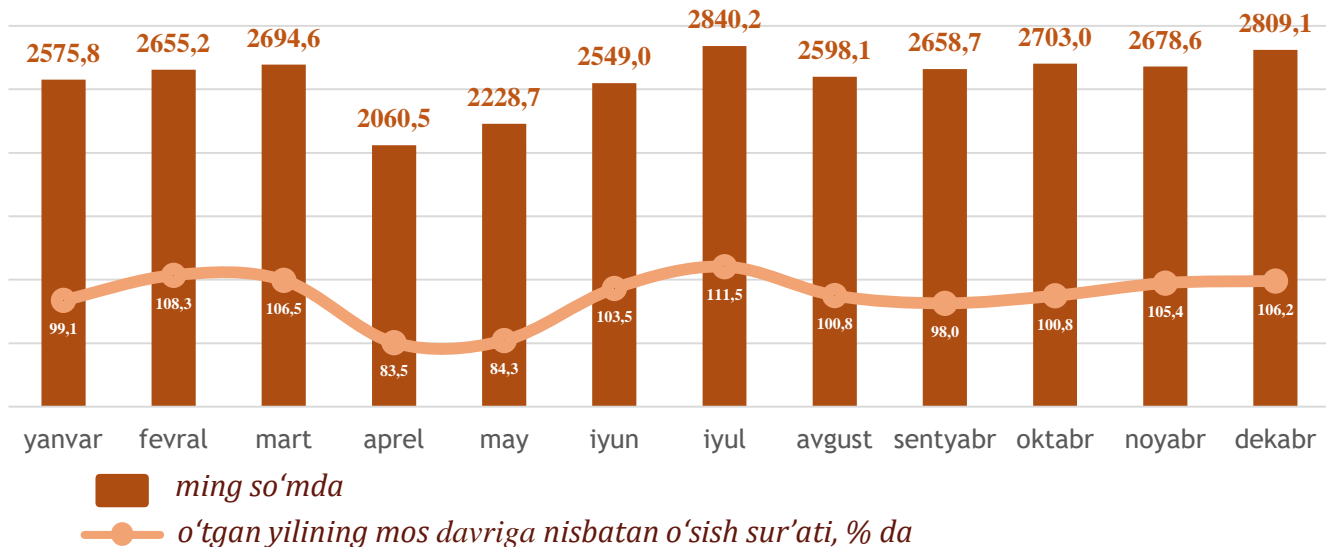


O'rtacha oylik ish haqining yillar kesimidagi dinamikasi, ming so'm

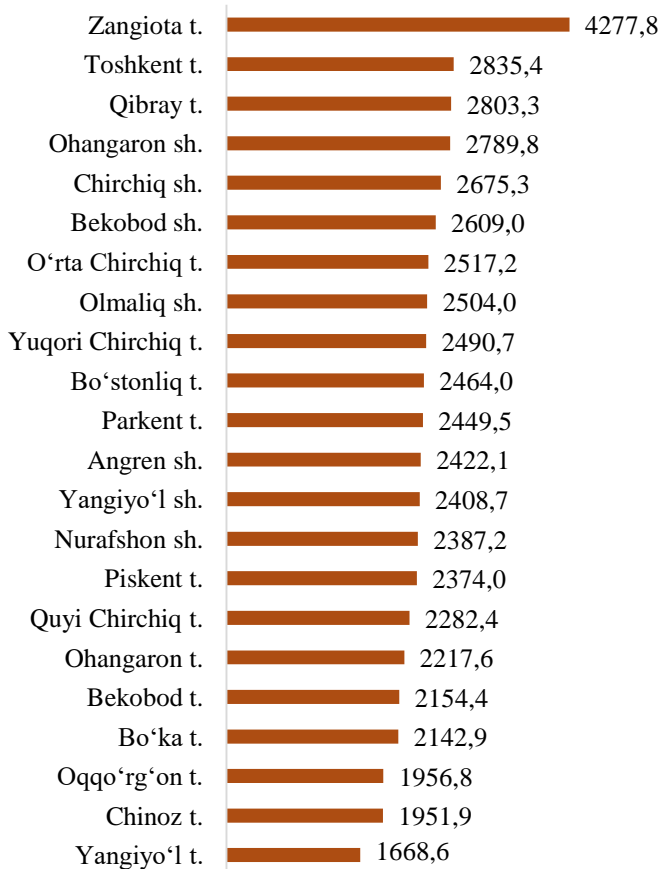


Ta'lim sohasi bo'yicha o'rtacha oylik ish haqining eng yuqori ko'rsatkichi Chirchiq shahri (**3522,1 ming so'm**), Olmaliq shahri (**3507,7 ming so'm**), Qibray tumani (**3348,1 ming so'm**), hamda Yangiyo'l tumani (**2985,5 ming so'm**)da kuzatildi.

SOG'LIQNI SAQLASH VA IJTIMOY XIZMATLAR KO'RSATISH SOHASIDA O'RTACHA OYLIK ISH HAQI

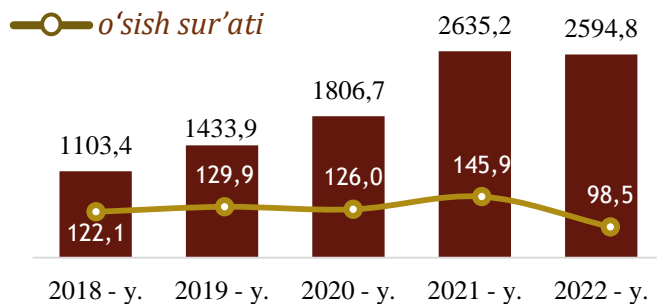


Hududlar kesimida



Sog'liqni saqlash va ijtimoiy xizmatlar ko'rsatish sohasining faoliyati turi bo'yicha o'rtacha oylik ish haqining eng yuqori ko'rsatkichi Zangiota tumani (**4277,8 ming so'm**), Toshkent tumani (**2835,4 ming so'm**), Qibray tumani (**2803,3 ming so'm**) hamda Ohangaron shahrida (**2789,8 ming so'm**) kuzatildi.

O'rtacha oylik ish haqining yillar kesimidagi dinamikasi, ming so'm



DEMOGRAFIYA VA MEHNAT STATISTIKASI BO'LIMI

Nominal hisoblangan ish haqi – ma'lum bir davr (soat, oy, yil) mobaynida xodim tomonidan ishlab chiqarilgan mahsulot (bajarilgan ish yoki ko'rsatilgan xizmat) evaziga ish beruvchilar tomonidan, amaldagi qonun hujjatlariga asoslangan holda soliq va boshqa to'lovlarni o'z ichiga oluvchi yollanma xodimning mehnatiga haq to'lash tarzida jismoniy shaxsga pul shaklida hisoblangan daromadlardan iborat.



Tel.: 71 202-86-78